



# SAW Components

Data Sheet B3582





SAW Components

B3582

Low Loss Filter

345,00 MHz

Data Sheet

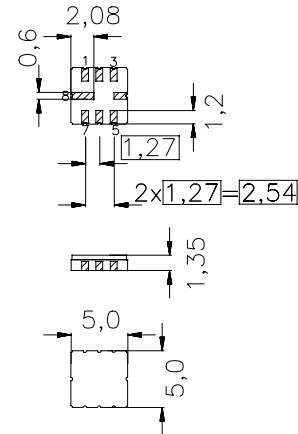
Ceramic package **QCC8C**

Features

- RF low-loss filter for remote control receivers
- Package for **S**urface **M**ounted **T**echnology (**SMT**)
- Hermetically sealed ceramic package
- No matching network required for operation at 50 Ω

Terminals

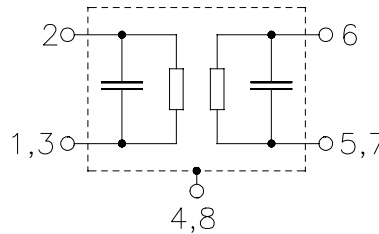
- Ni, gold plated



Dimensions in mm, approx. weight 0,1 g

Pin configuration

- 2 Input
- 1,3 Input Ground
- 6 Output
- 5,7 Output Ground
- 4,8 to be grounded



Type	Ordering code	Marking and Package according to	Packing according to
		C61157-A7-A56	F61074-V8070-Z000

Electrostatic Sensitive Device (ESD)

Maximum ratings

Operable temperature range	$T_A$	-25/+80	°C	source impedance 50 Ω
Storage temperature range	$T_{stg}$	-45/+90	°C	
DC voltage	$V_{DC}$	0	V	
Source power	$P_S$	0	dBm	



Data Sheet

Characteristics

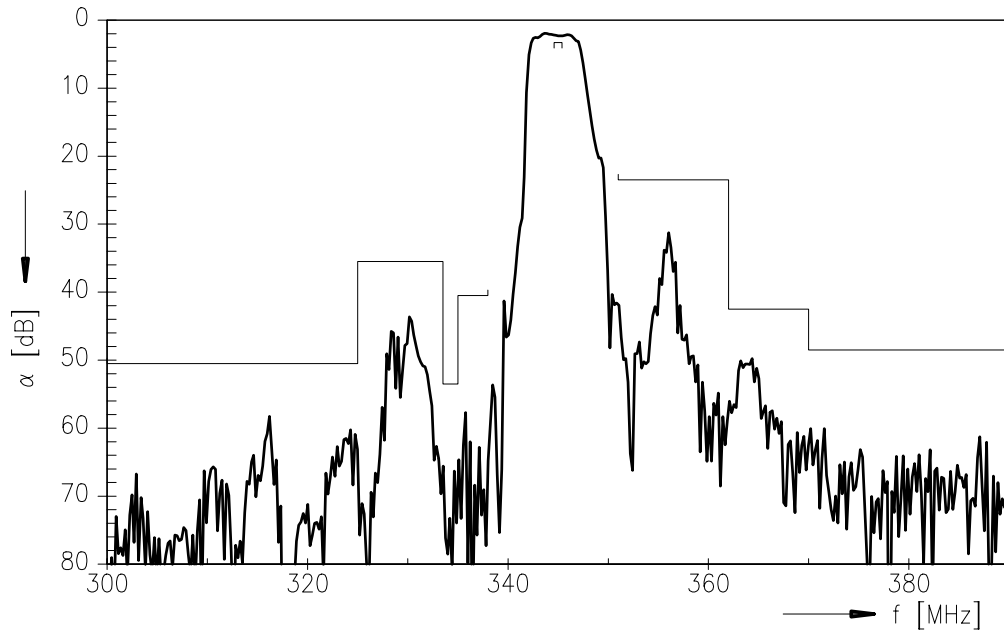
Reference temperature:  $T_A = 25\text{ °C}$   
 Terminating source impedance:  $Z_S = 50\ \Omega$   
 Terminating load impedance:  $Z_L = 50\ \Omega$

		min.	typ.	max.	
<b>Center frequency</b>	$f_c$	—	345,00	—	MHz
<b>Maximum insertion attenuation</b>					
	344,60 ... 345,40 MHz $\alpha_{max}$	—	2,3	3,3	dB
<b>Amplitude ripple (p-p)</b>	$\Delta\alpha$				
	344,60 ... 345,40 MHz	—	0,3	1,3	dB
<b>Relative attenuation (relative to <math>\alpha_{max}</math>)</b>	$\alpha_{rel}$				
	10,00 ... 320,00 MHz	50	60	—	dB
	320,00 ... 325,00 MHz	50	55	—	dB
	325,00 ... 333,50 MHz	35	40	—	dB
	333,50 ... 335,00 MHz	53	58	—	dB
	335,00 ... 338,00 MHz	40	45	—	dB
	351,00 ... 362,00 MHz	23	28	—	dB
	362,00 ... 370,00 MHz	42	47	—	dB
	370,00 ... 700,00 MHz	50	55	—	dB
	700,00 ... 1000,00 MHz	32	42	—	dB
<b>Temperature coefficient of frequency</b>	$TC_f$	—	-30	—	ppm/K

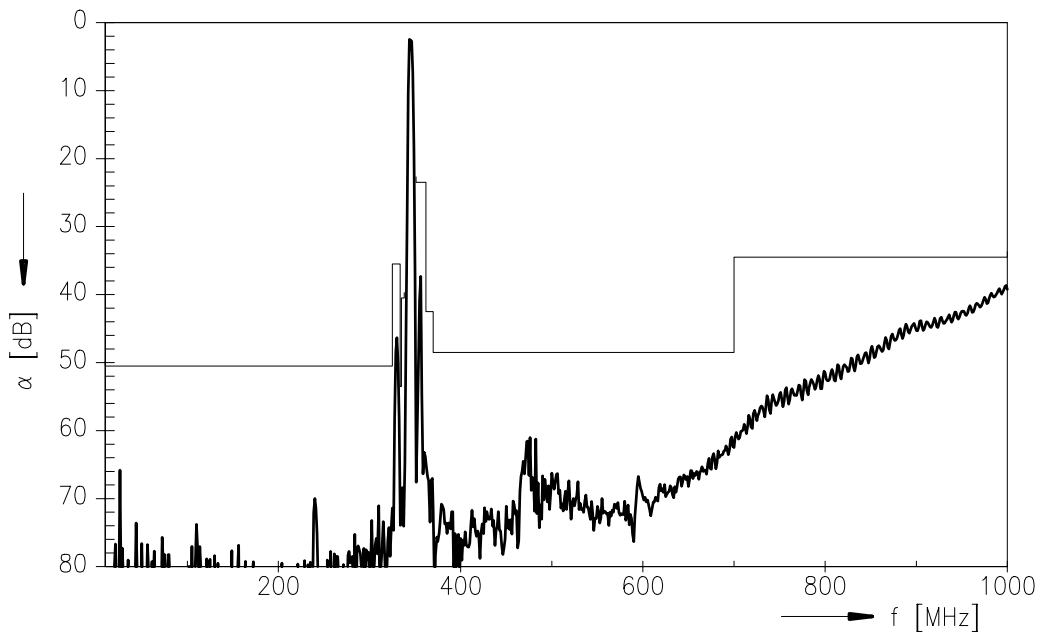


Data Sheet

Transfer function



Transfer function (wideband)





**SAW Components**

**B3582**

**Low Loss Filter**

**345,00 MHz**

Data Sheet

**Published by EPCOS AG**

**Surface Acoustic Wave Components Division, SAW CE AE PD**

**P.O. Box 80 17 09, D-81617 München**

© EPCOS AG 2001. All Rights Reserved.

As far as patents or other rights of third parties are concerned, liability is only assumed for components per se, not for applications, processes and circuits implemented within components or assemblies.

The information describes the type of component and shall not be considered as assured characteristics.

Terms of delivery and rights to change design reserved.

For questions on technology, prices and delivery please contact the sales offices of EPCOS AG or the international representatives.

Due to technical requirements components may contain dangerous substances. For information on the type in question please also contact one of our sales offices.